

**TPH1 Antibody (N-term)**  
**Affinity Purified Rabbit Polyclonal Antibody (Pab)**  
**Catalog # AP6930a****Specification**

---

**TPH1 Antibody (N-term) - Product Information**

Application	IF, FC, IHC-P, WB,E
Primary Accession	<a href="#">P17752</a>
Other Accession	<a href="#">Q92142</a> , <a href="#">P09810</a> , <a href="#">P17290</a> , <a href="#">P70080</a>
Reactivity	Human
Predicted	Chicken, Rabbit, Rat, Xenopus
Host	Rabbit
Clonality	Polyclonal
Isotype	Rabbit IgG
Calculated MW	50985
Antigen Region	35-62

**TPH1 Antibody (N-term) - Additional Information****Gene ID** 7166**Other Names**

Tryptophan 5-hydroxylase 1, Tryptophan 5-monooxygenase 1, TPH1, TPH, TPRH, TRPH

**Target/Specificity**

This TPH1 antibody is generated from rabbits immunized with a KLH conjugated synthetic peptide between 35-62 amino acids from the N-terminal region of human TPH1.

**Dilution**

IF~~1:10~50  
FC~~1:10~50  
IHC-P~~1:50~100  
WB~~1:500  
E~~Use at an assay dependent concentration.

**Format**

Purified polyclonal antibody supplied in PBS with 0.09% (W/V) sodium azide. This antibody is purified through a protein A column, followed by peptide affinity purification.

**Storage**

Maintain refrigerated at 2-8°C for up to 2 weeks. For long term storage store at -20°C in small aliquots to prevent freeze-thaw cycles.

**Precautions**

TPH1 Antibody (N-term) is for research use only and not for use in diagnostic or therapeutic procedures.

**TPH1 Antibody (N-term) - Protein Information**

**Name** TPH1

**Synonyms** TPH, TPRH, TRPH

**Function** Oxidizes L-tryptophan to 5-hydroxy-L-tryptophan in the rate- determining step of serotonin biosynthesis.

**Tissue Location**

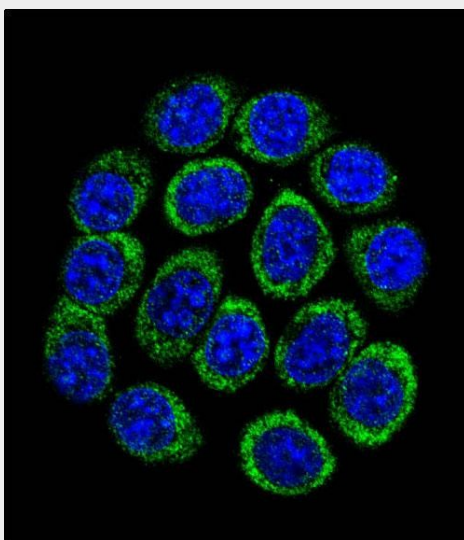
[Isoform 2]: Seems to be less widely expressed than isoform 1.

### TPH1 Antibody (N-term) - Protocols

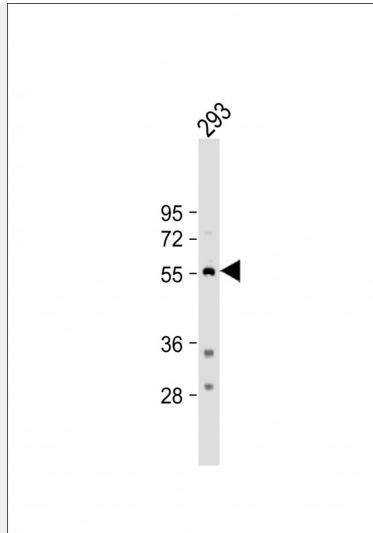
Provided below are standard protocols that you may find useful for product applications.

- [Western Blot](#)
- [Blocking Peptides](#)
- [Dot Blot](#)
- [Immunohistochemistry](#)
- [Immunofluorescence](#)
- [Immunoprecipitation](#)
- [Flow Cytometry](#)
- [Cell Culture](#)

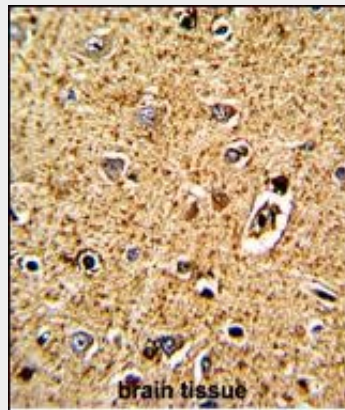
### TPH1 Antibody (N-term) - Images



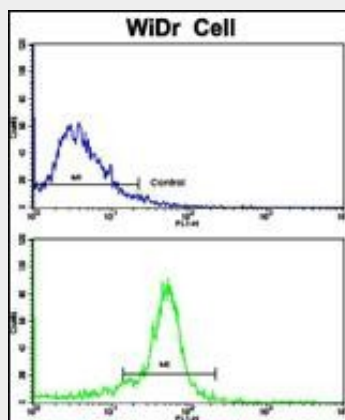
Confocal immunofluorescent analysis of TPH1 Antibody (N-term)(Cat#AP6930a) with 293 cell followed by Alexa Fluor 488-conjugated goat anti-rabbit IgG (green). DAPI was used to stain the cell nuclear (blue).



Anti-TPH1 Antibody (N-term) at 1:500 dilution + 293 whole cell lysate Lysates/proteins at 20  $\mu$ g per lane. Secondary Goat Anti-Rabbit IgG, (H+L), Peroxidase conjugated at 1/10000 dilution. Predicted band size : 51 kDa Blocking/Dilution buffer: 5% NFDM/TBST.



Formalin-fixed and paraffin-embedded human brain tissue with TPH1 Antibody (N-term), which was peroxidase-conjugated to the secondary antibody, followed by DAB staining. This data demonstrates the use of this antibody for immunohistochemistry; clinical relevance has not been evaluated.



Flow cytometric analysis of wiDr cells using TPH1 Antibody (N-term)(bottom histogram) compared to a negative control cell (top histogram). FITC-conjugated goat-anti-rabbit secondary antibodies were used for the analysis.

**TPH1 Antibody (N-term) - Background**

TPH1 is a member of the aromatic amino acid hydroxylase family. This protein catalyzes the first and rate limiting step in the biosynthesis of serotonin, an important hormone and neurotransmitter.

**TPH1 Antibody (N-term) - References**

Johansson,T.A., et.al., BMC Cancer 9, 321 (2009)  
Kuhn,D.M., et.al., J. Neurochem. 68 (5), 2220-2223 (1997)